

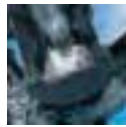
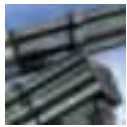


MAY 2005

# RAINWATER

PVC GUTTER SYSTEMS

PROSTYLE • ROUNDSTYLE • SQUARESTYLE • DEEPSTYLE • CAST IRON STYLE • INDUSTRIAL



[WWW.BRETTMARTIN.COM](http://WWW.BRETTMARTIN.COM)





# RAINWATER

## PVC GUTTER SYSTEMS



### GUTTER SYSTEMS

1. 106mm Prostyle
2. 112mm Roundstyle
3. 114mm Squarestyle
4. 115mm Deepstyle
5. Cast Iron Style
6. 160mm Industrial



Brett Martin's continued investment in product research, development and customer service has resulted in the achievement of a Rainwater range which satisfies every variety of roof drainage, ranging from the smallest domestic property to much larger agricultural and commercial buildings providing the merchant, installer and the end user with satisfaction, peace of mind and a full guarantee.

Each Rainwater system has been designed to facilitate fast, efficient, economical installation combined with exceptional reliability. All the domestic systems feature fixing arrangements for easy and straight screwdriver access, incorporating the popular Brett Martin clip fixing system, creating a neat and secure installation every time.

No matter which Rainwater system is selected, you are assured of an excellent high performance product offering unbeatable durability and low maintenance whilst ensuring ease of installation and will stay looking good and working well for years to come.

The Rainwater range benefits also from the introduction of a New Gutter Protection System. This durable plastic mesh fits easily onto the gutter, preventing leaves, moss and other debris from entering the system. For an enhanced visual impact of the pipe work, all downpipe fittings feature socketed connections, hiding all end cuts, speeding installation and maintaining the excellent appearance of the system.

Brett Martin's Rainwater systems have been fully tested for accelerated ageing in accordance with BS EN 607:1995 and the excellence of Brett Martin Rainwater systems is recognized through the company's achievement of BS EN ISO 9001:2000. You can be confident that, as a BSI Registered Firm, our Quality Assurance programme guarantees that Brett Martin's Rainwater is a first class product.

Following on from our investment in Research, Development, Quality Assurance and our focus on Customer Satisfaction, Brett Martin's Rainwater systems are covered by our extended Warranty and Guarantee package. This Guarantee covers a period of 10 years from date of purchase and covers unusual warping, splitting and discolouration providing the system has been installed following manufacturer's instructions and excludes any coating, paint or other surface treatment applied to the system (with the exception of the Cast Iron Style range where a specific Brett Martin formulated coating has been applied to components), damage caused by external agents, fair wear and tear from normal ageing and does not apply to consequential losses but to replacement of defective materials. Full warranty details are available on request from Brett Martin Ltd.

Rainwater is just part of Brett Martin's complete drainage and plumbing programme. The Rainwater range is complemented by the Brett Martin Drainage, Sewer, Surface Water, Soil and Waste systems to provide a complete sustainable solution for all your water cycle requirements.

Full technical and installation instructions are detailed on the company's web site at [www.brettmartin.com](http://www.brettmartin.com) and listed in the Rainwater Technical Guide, which is available on request. The company's sales and technical departments are always available to answer any queries and offer a complete design service.



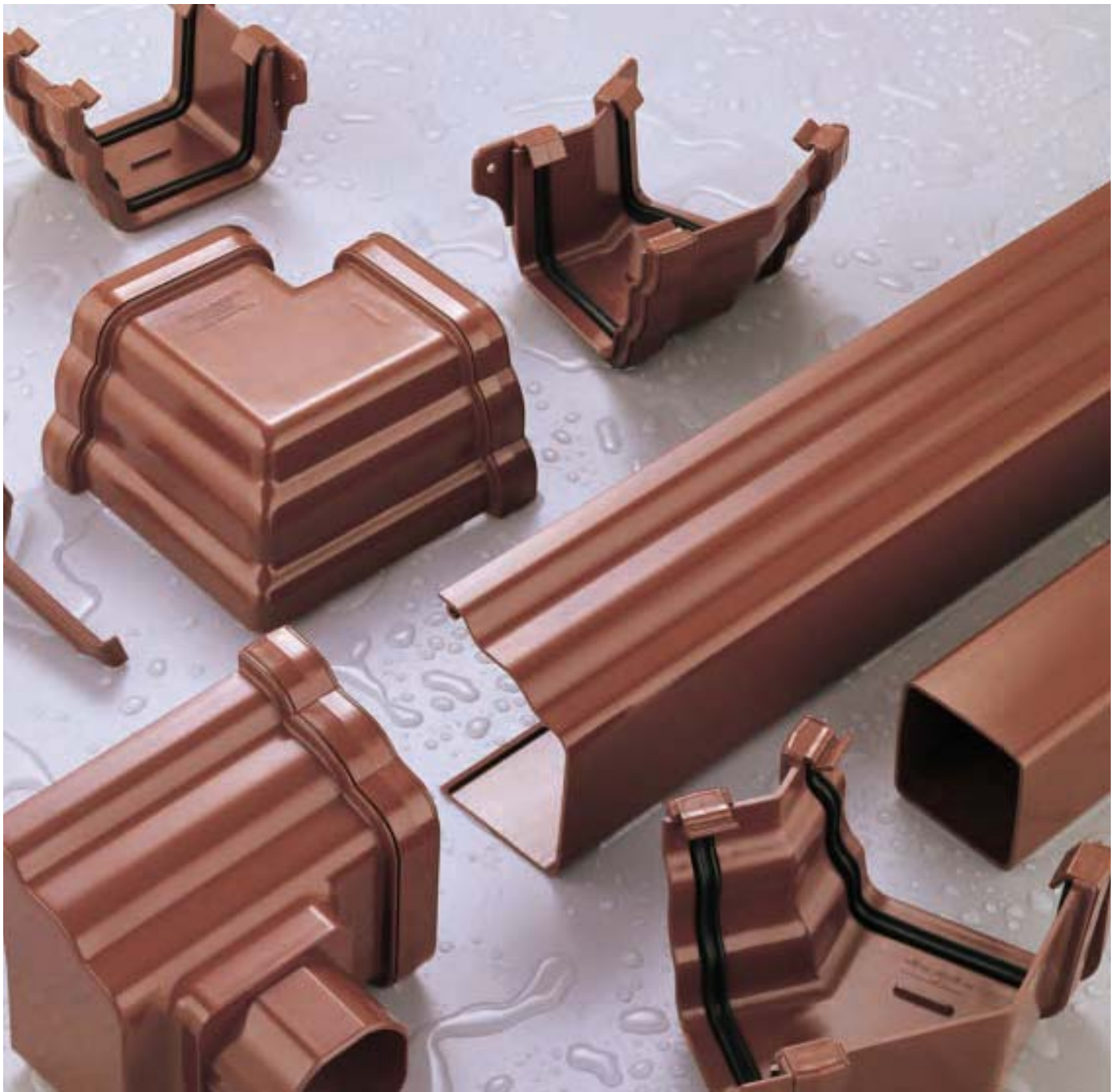




# PROSTYLE

106mm PVC RAINWATER SYSTEM

**NEW PROFILED GUTTER SYSTEM**



STRAIGHT FORWARD INSTALLATION AND EXCELLENT AESTHETICS ARE PROVIDED BY THIS VISUALLY COMPACT YET HIGHLY EFFICIENT PROFILED GUTTER SYSTEM.

Only 106mm across, the gutter is small enough to be ideally suited to conservatories or bungalows, whilst having sufficient capacity to handle larger houses due to its unique design.



Moulded seals and fixing wings are on all relevant fittings with the option of a hidden, top hung, fascia bracket also available.

Connects to 68mm Roundstyle, 65mm Squarestyle and 68mm Cast Iron Style downpipe and available in White, Black, Brown and Cast Iron Style finish.

Like all Brett Martin rainwater products the use of UV stabilised plastic is standard so that systems retain their high quality appearance thus giving excellent durability.



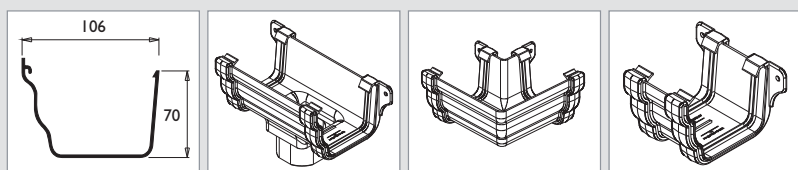
FEATURES INCLUDE:

- High profile front conceals roof edge and helps prevent overspill
- Moulded seals provide high level of fitting integrity
- Outlets, unions and angles feature external fixing wings for easy access during installation which saves time
- Choice of hidden or exposed fascia brackets
- None of the fittings have open fixing holes in the wet part of the system
- Integral flexible clips on fittings ease installation
- Manufactured to the requirements of BS EN 607 & EN 1462

106mm Prostyle Rainwater System

		Gutter Flow Capacity Litres per second		Maximum Roof Area m <sup>2</sup>	
		Level	1:600	Level	1:600
106mm	Outlet at one end	2.05	2.55	97	121
Prostyle	Outlet at centre	4.1	5.1	195	242

Colour Availability  White  Black  Brown





# ROUNDSTYLE

112mm PVC RAINWATER SYSTEM

THE ULTIMATE DOMESTIC SYSTEM





THE 112mm ROUNDSTYLE RAINWATER SYSTEM HAS BEEN SPECIALLY DESIGNED TO FACILITATE FAST, EFFICIENT AND SIMPLE INSTALLATION WHILST RETAINING A TRADITIONAL RAINWATER SYSTEM DESIGN. IDEAL FOR A WIDE RANGE OF SINGLE AND MULTI-STOREY DWELLINGS.

The choice of colours available allows this rainwater system to blend discretely into a building, regardless of the finish, or stand out as a feature if desired.



The 112mm Roundstyle system features distinctive integral flexible clips that allow quick and easy snap together assembly on to the gutter length.

External fixing lugs allow the use of cordless power tools, for fast and efficient installation. All fixings may now be kept out of the 'wet' areas of the system, greatly reducing the risk of problems after installation.

The system has been designed to facilitate the conversion of the running outlet into a stopend outlet. Simply trim off the exposed fixing lug and insert an internal stopend, thus preventing the need for handed stopend outlet components.

**FEATURES INCLUDE:**

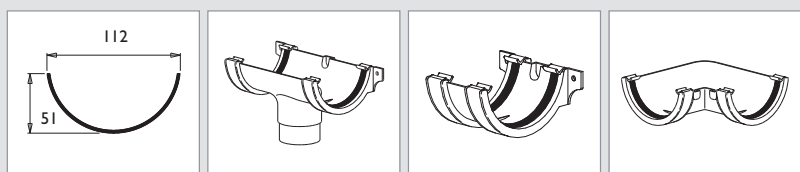
- Integral flexible clips on all fittings, for easy fixing
- Power tool friendly
- Outlets and unions feature external fixing wings for easy access
- Sealed fixing points on outlets and unions for simple rafter bracket installation
- Sealed internal fixing points on 90° angles prevent the necessity of handed versions
- No fittings have open fixing holes in the wet part of the system
- Manufactured to the requirements of BS EN 607 & EN 1462



Brett Martin's Roundstyle Rainwater System meets all the requirements of the busy installer.

112mm Roundstyle Rainwater System					
		Gutter Flow Capacity Litres per second		Maximum Roof Area m <sup>2</sup>	
		Level	1:600	Level	1:600
112mm	Outlet at one end	1.00	1.3	48	62
Roundstyle	Outlet at centre	1.82	2.43	87	116

**Colour Availability**  White  Black  Brown  Grey





# SQUARESTYLE

114mm PVC RAINWATER SYSTEM

THE MODERN DOMESTIC SYSTEM





THE SHAPE OF THE 114mm SQUARESTYLE RAINWATER SYSTEM PROVIDES A VERY CLEAN AND SIMPLE LOOK, IDEAL IN STRUCTURES WITH CONTEMPORARY STYLING.

The clean lines of the gutter and downpipe systems give a flow capacity up to 20% higher than half round systems which means not only does Squarestyle look good it performs well.



Squarestyle like Roundstyle, Deepstyle and Prostyle features integral fixing clips that allow quick and easy snap together assembly on the gutter length. Careful design ensures these are robust enough to provide years of trouble free service yet are flexible enough to allow simple installation. The outlets and unions feature external fixing wings, making them power tool friendly for simple installation.

Brett Martin's rainwater systems have been successfully tested for accelerated ageing in accordance with BS EN 607: 1995.

The company guarantees the colourfastness of white rainwater systems for a period of ten years, from date of manufacture. Full warranty details are available on request from Brett Martin Ltd.

FEATURES INCLUDE:

- Modern appearance
- Easy installation
- Up to 20% higher flow capacity than half round systems
- Excellent drainage for larger domestic roofs
- Three colour options available
- Manufactured to the requirements of BS EN 607 & EN 1462

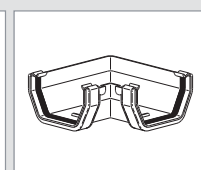
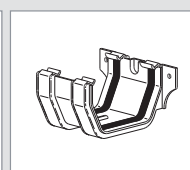
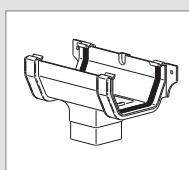
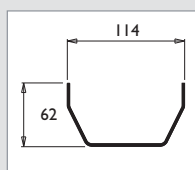


Squarestyle has been a hugely popular system for many years and is suitable for refurbishments and extensions as well as new build projects.

114mm Squarestyle Rainwater System

	Gutter Flow Capacity Litres per second		Maximum Roof Area m <sup>2</sup>	
	Level	1:600	Level	1:600
114mm Outlet at one end	1.20	1.52	57	72
Squarestyle Outlet at centre	2.20	3.03	106	144

Colour Availability  White  Black  Brown





# DEEPSTYLE

115mm PVC RAINWATER SYSTEM

THE HIGH CAPACITY SYSTEM



DEEPSTYLE IS A SEMI ELLIPTICAL SYSTEM, SPECIFICALLY PRODUCED TO OFFER EFFECTIVE TROUBLE FREE RAINWATER DRAINAGE ON LARGER ROOF AREAS WHERE IT CAN PROVIDE SIGNIFICANT COST SAVINGS.

Opportunities to reduce downpipes due to higher capacity can provide substantial cost reductions and appearance improvements.



Deepstyle's high capacity nature provides a very efficient system for the drainage of large roof areas, whilst still providing a discrete unobtrusive rainwater system. In fact Deepstyle offers an increase of 50% in flow capacity when compared to the 112mm Roundstyle system.

The high capacity nature of Deepstyle has the potential to reduce the number of downpipe and drainage runs required. This speeds installation and can reduce overall costs dramatically.

**FEATURES INCLUDE:**

- Higher self cleansing ability
- Potential to reduce downpipe runs
- Compatible with other semi elliptical systems
- Easy fix clip system
- Efficient high capacity
- Minimum number of components are required
- Cost saving potential
- Power tool friendly
- Four colour options
- Manufactured to the requirements of BS EN 607 & EN 1462



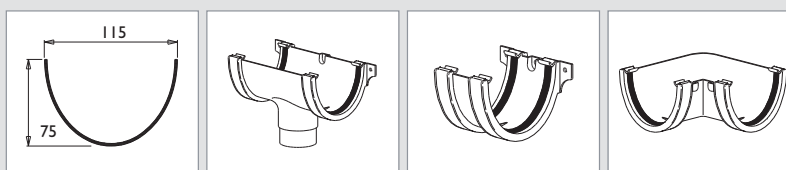
The system is characterised by an easy fix clip system, which facilitates simple installation whilst external fixing lugs allow easy access for cordless power tools. Deepstyle is fully compatible with other leading deep flow systems.



**115mm Deepstyle Rainwater System Comparison Chart**

		Gutter Flow Capacity Litres per second		Maximum Roof Area m <sup>2</sup>	
		Level	1:600	Level	1:600
115mm Deepstyle	Outlet at one end	1.88	2.30	90	110
	Outlet at centre	3.75	4.58	180	220
112mm Roundstyle	Outlet at one end	1.00	1.30	48	62
	Outlet at centre	1.82	2.43	87	116
114mm Squarestyle	Outlet at one end	1.20	1.52	57	72
	Outlet at centre	2.20	3.03	106	144

**Colour Availability**  White  Black  Brown  Grey







# CAST IRON STYLE

106mm to 115mm PVC RAINWATER SYSTEM

**TRADITIONAL STYLED SYSTEM**



ALL THE APPEARANCE OF TRADITIONAL CAST IRON, BUT WITH ALL THE BENEFITS OF PVC. THE BRAND NEW BRETT MARTIN CAST IRON STYLED RAINWATER SYSTEMS GIVE YOU BOTH.

The specially coated PVC gutter systems combine with traditionally styled plastic pipework to give the full appearance of a cast iron system. The full range comes ready to fix with no need for primers, undercoat or topcoat to prevent corrosion.

Available in 106mm Profiled, 112mm Round, 115mm Deep and 68mm downpipes and accessories

**NUMEROUS BENEFITS INCLUDE:**

- Significantly cheaper than Cast Iron
- Huge savings in installation time
- 4m gutter lengths means fewer joints and less labour
- Integral seals that speed installation are included in the cost (no fixing kit extras)
- Lighter, easier and safer to handle. Provides health and safety benefits particularly when working at heights
- Simple and quicker to cut to length
- No nuts and bolts, lead strip spacers, spanners, metal primer, paint or disc cutters required
- External fixing wings on gutter fittings ease installation and reduce the number of fascia brackets to maximise support

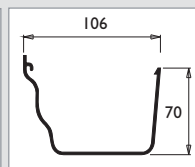
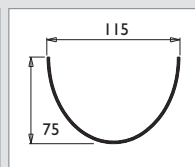
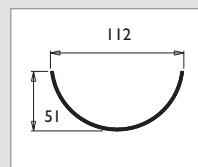


**Cast Iron effect Downpipes and Hoppers**

The pipework range includes a 1.8m length of pipe with integral socket and fixing lugs, as does the pipe coupler and shoe to enable the downpipe to be secured to the wall. Pipe connection to the gutter outlet is achieved with either one of a range of one-piece offsets or directly into one of three styled hoppers.

**Cast Iron Style Gutter Capacities**

		Gutter Flow Capacity Litres per second		Maximum Roof Area m <sup>2</sup>	
		Level	1:600	Level	1:600
106mm Prostyle	Outlet at one end	2.05	2.55	97	121
	Outlet at centre	4.1	5.1	195	242
112mm Roundstyle	Outlet at one end	1.00	1.30	48	62
	Outlet at centre	1.82	2.43	87	116
115mm Deepstyle	Outlet at one end	1.88	2.30	90	110
	Outlet at centre	3.75	4.58	180	220





# INDUSTRIAL

160mm PVC RAINWATER SYSTEM

COMMERCIAL, INDUSTRIAL, AGRICULTURAL





THE INDUSTRIAL RAINWATER SYSTEM IS IDEALLY SUITED TO AGRICULTURAL, INDUSTRIAL AND COMMERCIAL PROPERTIES WHICH REQUIRE A SIMPLE AND EFFECTIVE DRAINAGE SOLUTION.

The high capacity drainage solution for large roof areas



The 160mm Industrial Rainwater System is not only functional but it has been designed with a refined appearance. The stopends have been contoured and a moulded shadow line feature is incorporated on all fittings to produce neat continuous top edges. The outlet union and angle fittings incorporate double seals in each joint to ensure optimum performance of this larger profile gutter.

**FEATURES INCLUDE:**

- Double seals on outlet, unions and angles
- Incorporates 110mm downpipes
- Optimum performance provided in all conditions
- Flexibility
- Refined appearance
- Suited to agricultural, industrial and commercial properties

**160mm Industrial Rainwater System**

		<b>Gutter Flow Capacity Litres per second</b>	<b>Maximum Roof Area m<sup>2</sup></b>
		<b>1:600</b>	<b>1:600</b>
160mm	Outlet at one end	3.23	155
Industrial	Outlet at centre	6.47	310

**Colour Availability** ■ Black ■ Brown ■ Grey



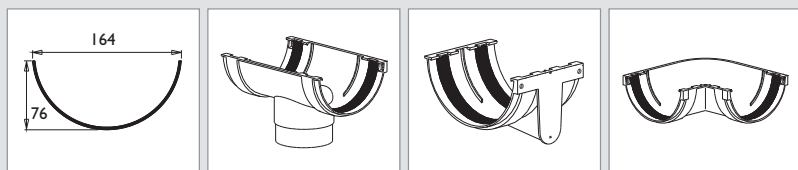
**Downpipes 110, 160, 200mm**

The Industrial Rainwater Downpipe Systems have been developed in conjunction with all types of gravity drainage systems and are available in 110mm, 160mm and 200mm diameter, in either plain ended or single socket format. High quality PVC fittings, including bends, branches, access pipes and clips ensure the systems retain the adaptability essential in the planning of an industrial rainwater scheme.

The Industrial Rainwater Downpipe system is available in a comprehensive range of colours. At ground level, the rainwater system is fully compatible with Brett Martin's extensive range of underground drainage systems, as well as other systems also meeting the requirements of the relevant British Standards.

**Colour Availability**

- 110mm:**  
 □ White ■ Black ■ Brown ■ Grey
- 160mm:** ■ Grey  
**200mm:**  
 ■ Terracotta





**Brett Martin Ltd**

24 Roughfort Road  
Mallusk, Co. Antrim  
Northern Ireland BT36 4RB  
Tel: 028 9084 9999  
Fax: 028 9083 6666  
Sales Counter: 028 9084 8999  
Email: mail@brettmartin.com

**Brett Martin Building Products Ltd**

Speedwell Ind. Estate  
Staveley, Derbyshire  
England, S43 3JP  
Tel: 01246 280000  
Fax: 01246 280001  
Email: building@brettmartin.com

**Brett Martin Scotland Ltd**

Blairlinn Road  
Cumbernauld, Glasgow  
Scotland, G67 2TF  
Tel: 01236 725536  
Fax: 01236 725871  
Email: scotland@brettmartin.com

For the latest information visit the  
company's web site:  
[www.brettmartin.com](http://www.brettmartin.com)

805BP04051

WWW.BRETTMARTIN.COM

